

PUBLIC EXPOSE

PT SARANA MEDITAMA METROPOLITAN Tbk
(SAME)



DISCLAIMER

This presentation has been prepared by PT Sarana Meditama Metropolitan Tbk (“SAME”) as a general overview of the Company’s condition and performance.

The information contained herein does not constitute investment advice, an offer to buy or sell securities, or any financial recommendation. It does not take into account the specific objectives, financial situation, or needs of any particular party.

The consolidated financial information presented, including the financial position as of 31 December 2025, has been prepared in accordance with Indonesian Financial Accounting Standards and has been audited by an independent auditor.

SAME and its related parties shall not be held liable for any loss arising from the use of the information contained in this presentation.



AGENDA

1. COMPANY OVERVIEW 

2. STRATEGIC INITIATIVES

3. PERFORMANCE REVIEW



BOARD OF COMMISSIONERS



Robert Pakpahan
President Commissioner &
Independent Commissioner



Unggung Cahyono
Independent Commissioner



Heru Kristiyana
Independent Commissioner



Alexander Tedja
Commissioner



BOARD OF DIRECTORS



Jusup Halimi
President Director



Juniwati Gunawan
Vice President Director



Meta Dewi Thedja
Director



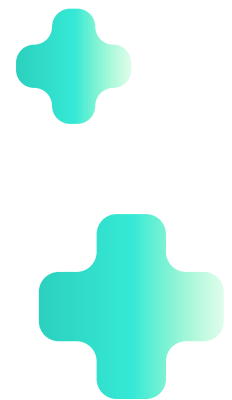
Kusmiati
Director



Nailufar
Director



Armen Antonius Djan
Director





1

EMC Alam Sutera



2

EMC Cibitung



3

EMC Cikarang



4

EMC Grha kedoya



5

EMC Pekayon



6

EMC Pulomas



7

EMC Sentul

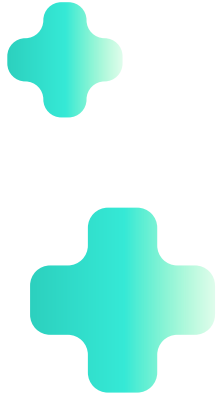
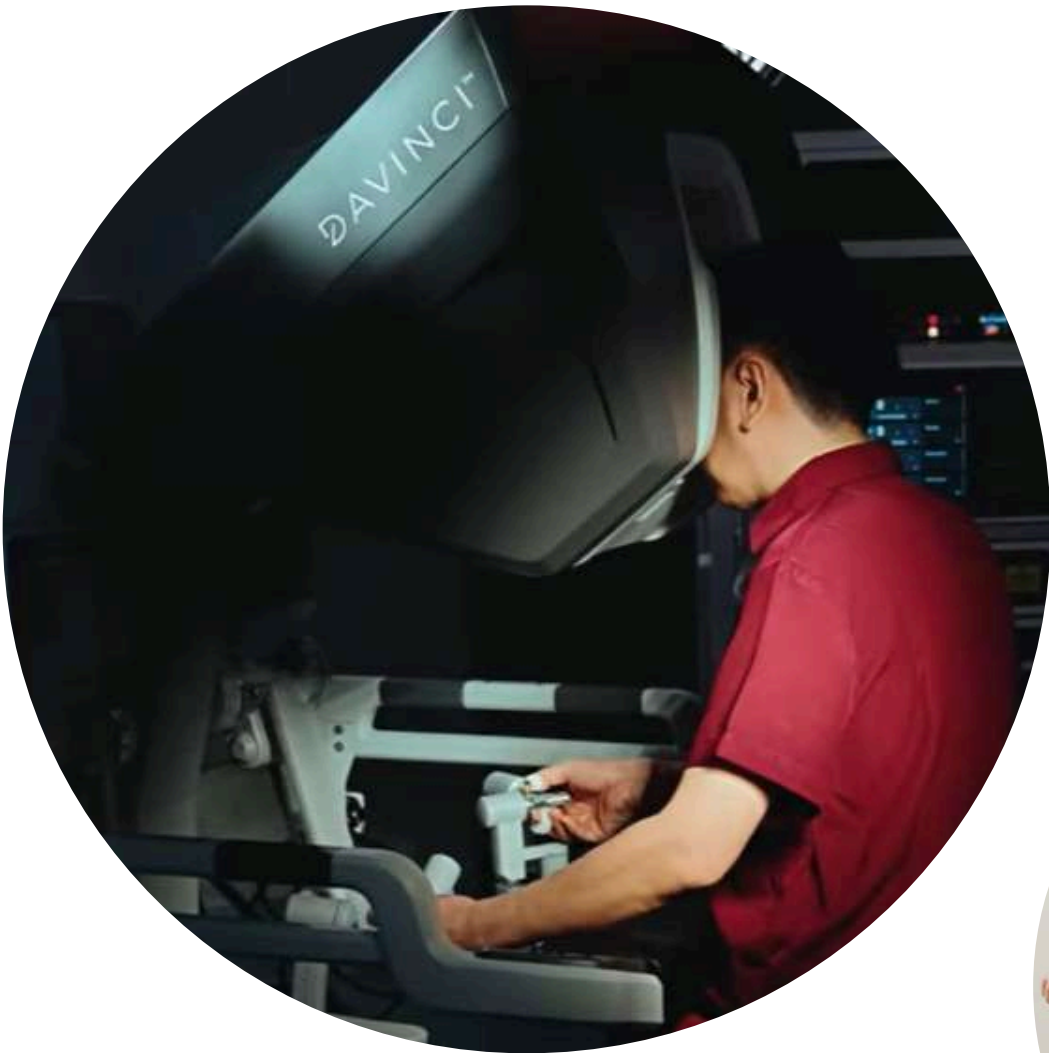


8

EMC Tangerang

**SAME
GROUP** BUSINESS PORTFOLIO

BUSINESS PORTFOLIO **SAME GROUP**



Providing
healthcare
to the community
since **1972**

8 hospital units
have been **fully**
accredited by


 **4 of 8**
hospital units have
been **accredited** by
JCI

Facilitated with
up to **1,430**
medical bed
capacity


966 Doctors
were hired

- 744 specialists
- 209 general practitioners
- 13 medical psychologists

in 2023

 Moved to The
IDX Main
Listing Board

Vision

EMC aspires to provide the most trusted and accessible healthcare for the advancement of the nation's healthcare quality

Mission

- Putting patients' needs and safety as our utmost priority
- Promoting culture of continuous learning and innovation
- Building healthcare centers of excellence with international standard quality

Core Value



Empathy
&
Integrity



Meaningful
&
Respect



Competence
&
Innovation



2025 AWARDS



2025 Spine Centre of
The Year in Indonesia



2025 Advanced PET/CT Scan
Service Centre of the Year in
Asia-Pacific



Achievement of HIMSS
EMRAM Stage 6
Validation

2025 AWARDS



Supporting Company for the Inclusion and Protection of Vulnerable Workers Program



The Best Medical Service as the Top Emergency Care Center 2025



The Best I Work Accident Service Center (PLKK) for Type C-D Hospitals

2025 AWARDS



Hospital Commitment to Implementing an Online Queue System and Integrated Claims System Awarded by BPJS Kesehatan



The Best Innovation in ESG Implementation and Best Innovation in Circular Economy Implementation



The Best Main Work Accident Service Center (PLKK) for Productivity and Compliance

2025 AWARDS



Top 50 Middle Capitalization Public Listed Companies in GCG Best Practice and Best Non-Financial Sector (Mid Cap) at The 16th IICD Award



The Indonesia Best Companies in HSE Implementation 2025



Stellar Workplace Recognition in Employee Commitment and Employee Satisfaction 2025



The Winner of Corporate Secretary Champion 2025

AGENDA

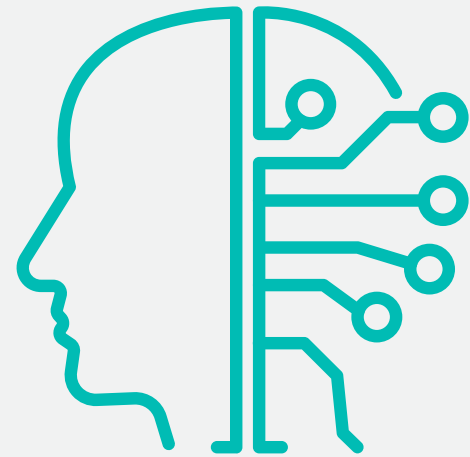
1. COMPANY OVERVIEW

2. STRATEGIC INITIATIVES

3. PERFORMANCE REVIEW



2025 STRATEGIC INITIATIVES



Health information system AI driven

Through partnership with InterSystems to become the first hospital group in the world to implement InterSystems IntelliCare. EMC Healthcare also leveraging AI for funduscopy examinations and cognitive disorder prediction



Advance Robotic Technology

Through the implementation of advanced robotic systems, including ROSA for knee procedures and the Da Vinci Surgical System, strengthening surgical precision and patient outcomes



Information Technology Support in the HR Management System

Through the implementation of a digital and integrated Human Resources Information System (HRIS), the Company supports data-driven insights and more effective workforce management

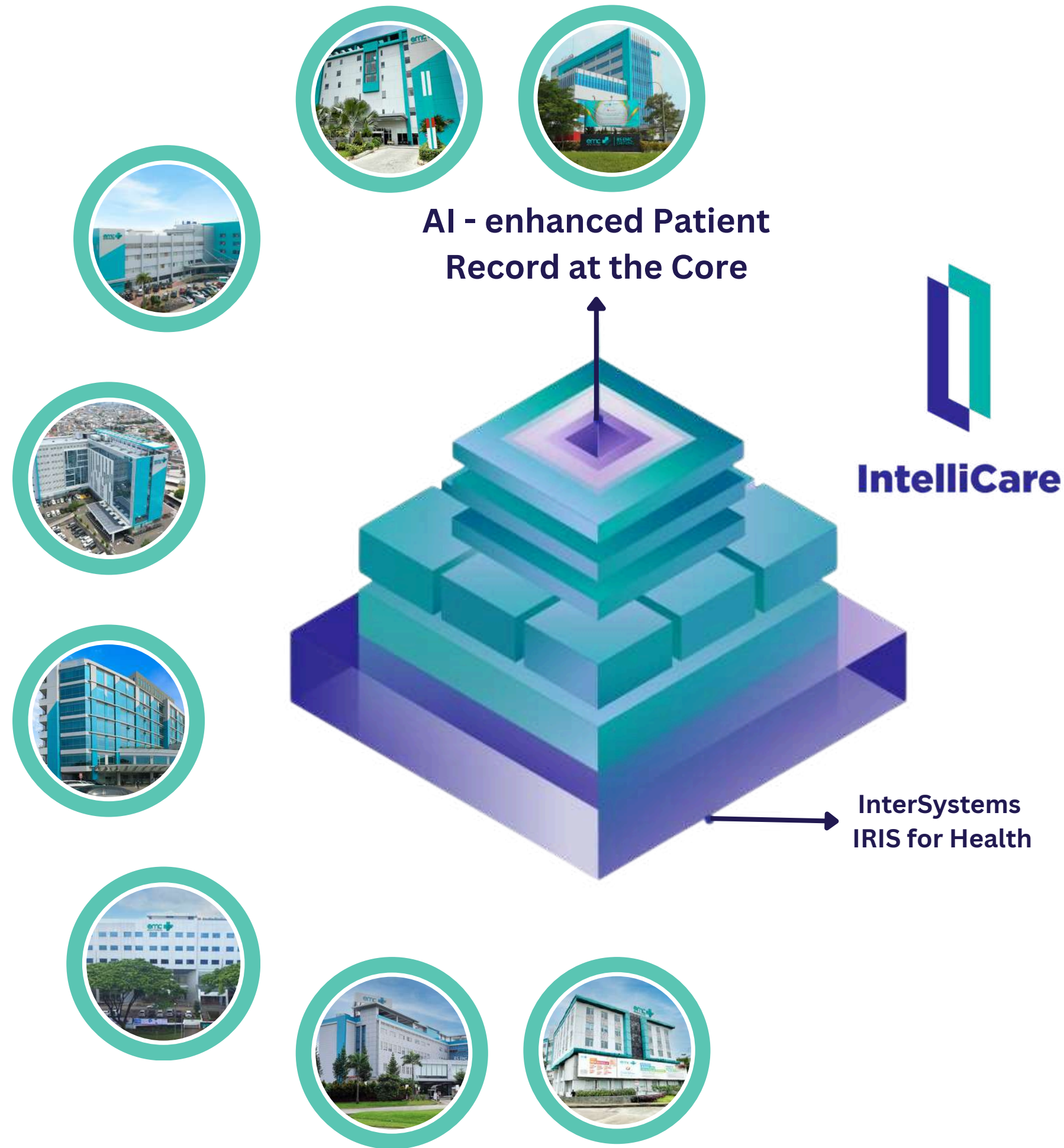


Towards Green and Sustainable Healthcare

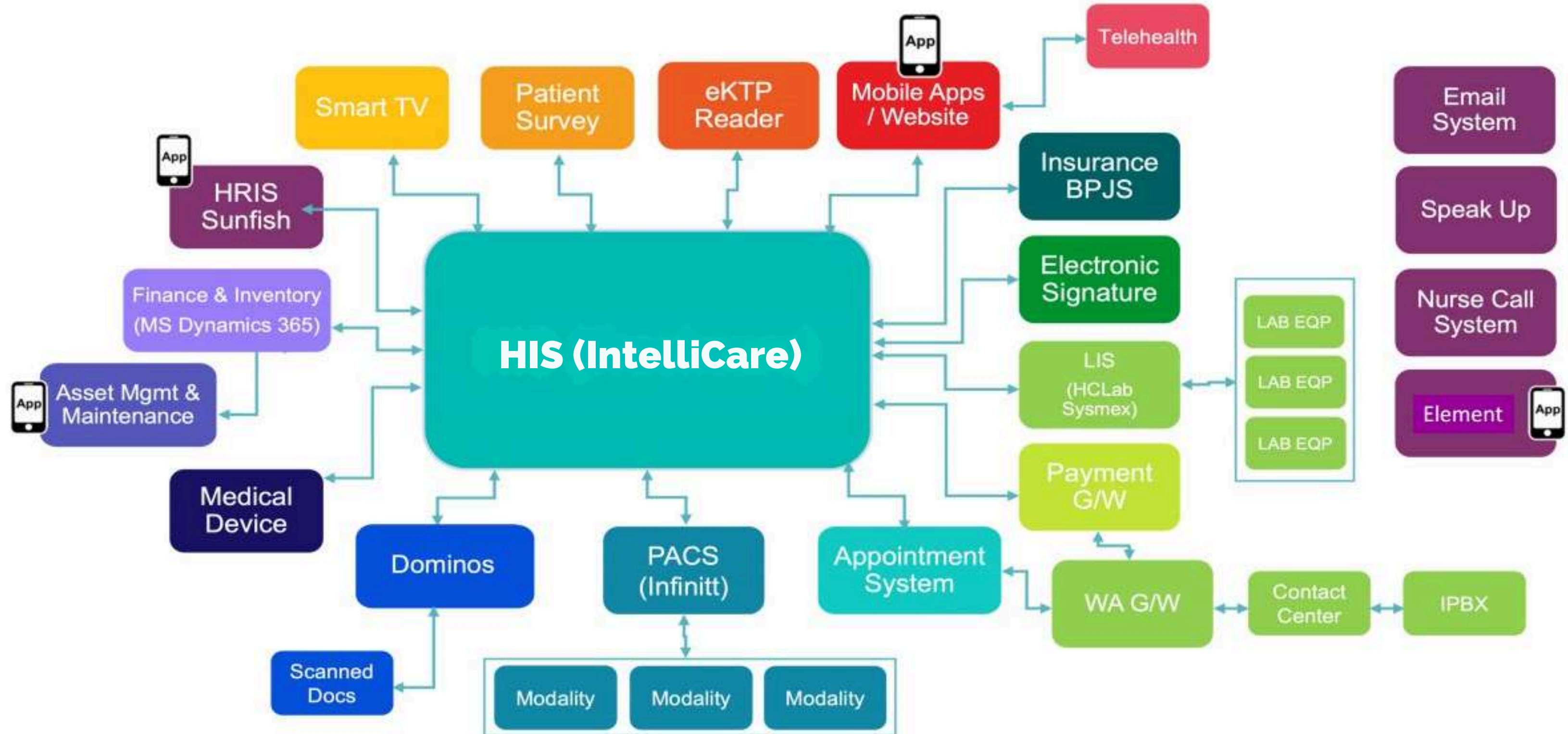
Through sustainable hospital operations focused on efficient waste management, water conservation, and energy and emission reduction

TRANSFORMING HEALTHCARE THROUGH AN AI-DRIVEN HOSPITAL SYSTEM

In 2025, EMC Healthcare reached a major milestone by transforming into an AI-powered hospital group, supported by the implementation of InterSystems IntelliCare and a fully integrated Hospital Information System (HIS) across all units



IT System Integration



ADVANCED HEALTHCARE TECHNOLOGY

Da Vinci Xi Robotic Surgery



Biograph Vision Quadra PET/CT Scanner



Da Vinci xi Robotic Surgery is an advanced technology that enhances surgical precision through superior 3D visualization and robotic-assisted instruments. Available at **EMC Alam Sutera Hospital**, this innovation supports minimally invasive procedures and enabled the hospital to perform **Indonesia's first bariatric surgery** using the da Vinci Xi robotic surgery in 2025.



In August 2025, EMC Healthcare launched the **Biograph Vision Quadra PET/CT Scanner**, as part of its **commitment to advancing oncology services in Indonesia**. PET/CT scanner is designed to **scan large areas of the body at high speed and in great detail**. This technology enables earlier and more accurate cancer detection, while providing comfort for patients.

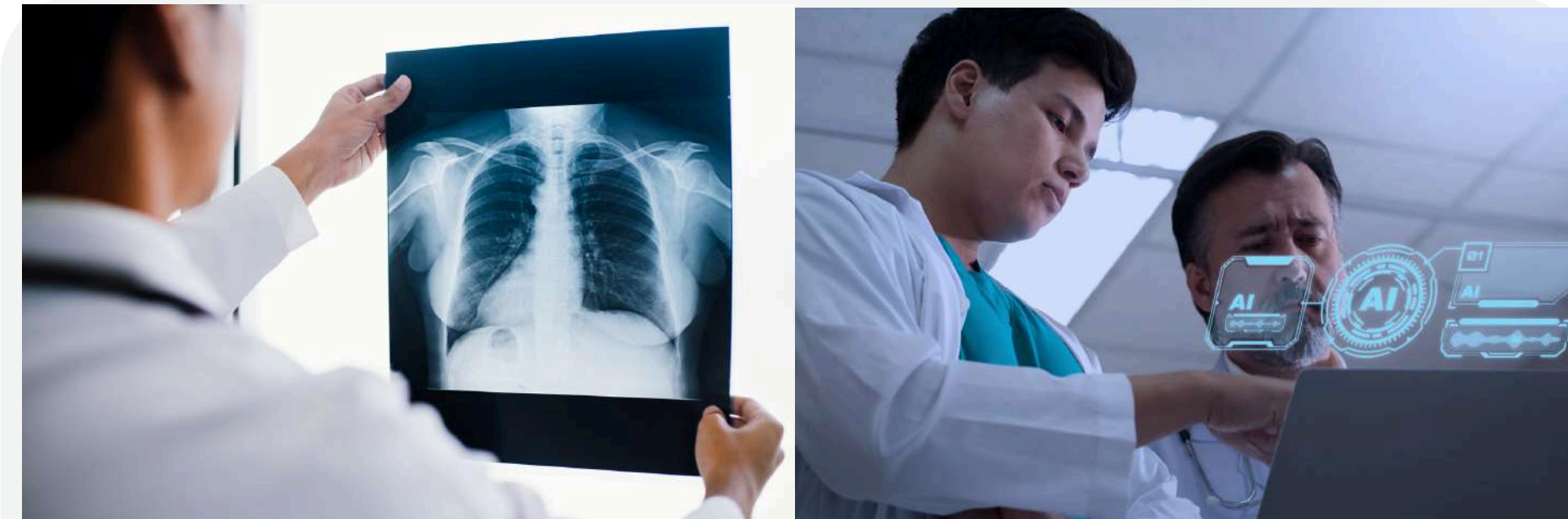


ADVANCED HEALTHCARE TECHNOLOGY



ROSA (Robotic Surgical Assistant) Robotic Technology

ROSA is an advanced robotic system that supports orthopedic surgeons in performing highly precise knee replacement procedures. This technology enhances accuracy, reduces invasiveness, and delivers more natural outcomes with faster recovery. **Through the adoption of ROSA, EMC Alam Sutura Hospital is setting a new standard in total knee replacement with improved precision, minimal pain, and better patient outcomes.**



AI-Powered Thorax Imaging and Funduscopy Innovation

In 2025, the implementation of AI was expanded through a pilot project in two EMC hospital units, where **the technology is used to analyze thorax X-rays**. This initiative aims to improve diagnostic accuracy and speed, particularly in the early detection of lung and cardiac abnormalities. In addition, **AI is also utilized in funduscopy examinations, enabling more precise and efficient identification of various health conditions through retinal analysis.**

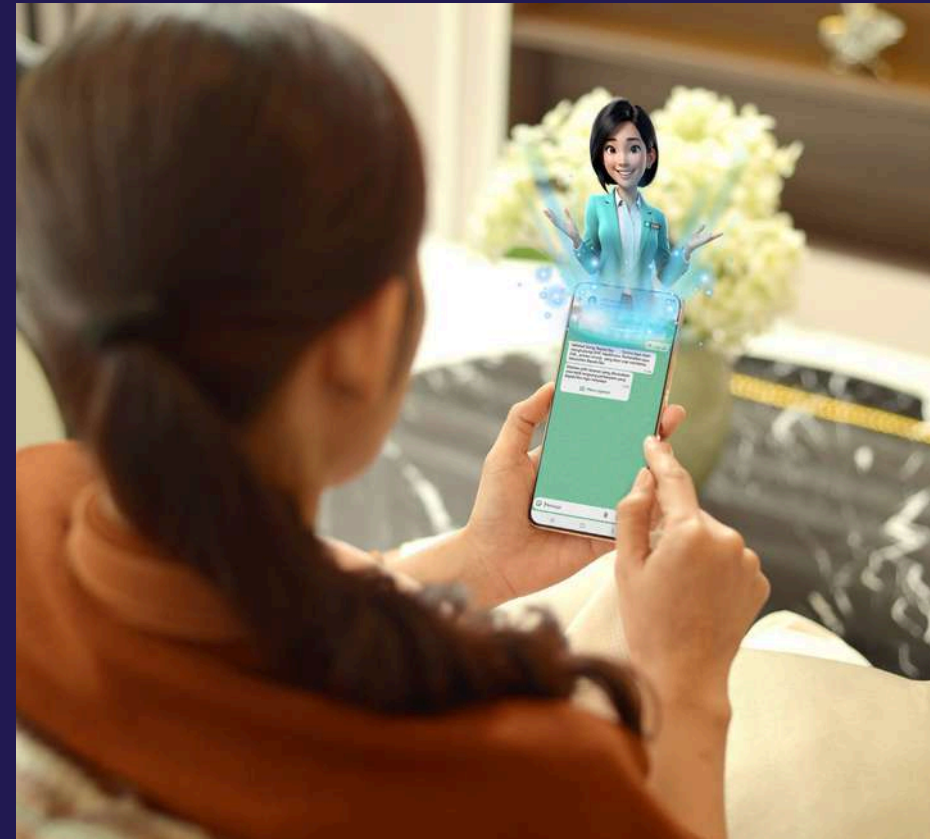
Transition to a Fully AI-Driven Hospital Network

AI INNOVATION



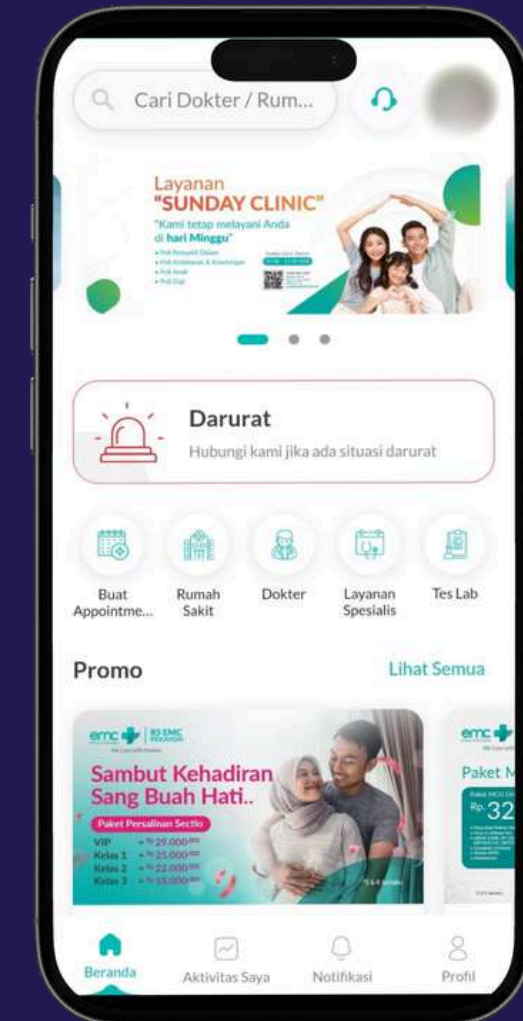
IntelliCare

EMC Healthcare's advanced AI - driven health information system unifies data and operations into a single, intelligent platform. Designed to streamline workflows and reduce administrative burden, it enables EMC healthcare to focus more fully on delivering exceptional patient care



EMC Virtual Assistant (EVA)

EVA, AI-powered Virtual Assistant, through the Integrated Contact Center. Starting 1 January 2025, patients can also reach EVA via WhatsApp, making it easier than ever to get assistance anytime, anywhere



EMCare

In 2025, EMC Healthcare further enhanced the **EMCare application by upgrading features** that improve patient access to healthcare services. Through these improvements, patients can now conveniently access and review their **medical records through the EMCare**

ENHANCING PATIENT EXPERIENCE & DIGITAL TRANSFORMATION



Improve Patient Feedback Response

Drive higher response rates through streamlined surveys and increased accessibility

2023 2024 2025

Inpatient: 24% → 32% → 51%

Outpatient: 11% → 13% → 17%



Strengthen Online Reputation (Google)

Higher patient satisfaction reflected in improved ratings and strong review growth

Reviews: +107%

Rating: 4.52 → 4.62 → 4.75
(2023) (2024) (2025)



Reduce Waiting Time

Significantly reduced total visit time from **3h 15m (in 2024)** → **2h18m (in 2025)**, by implementing:

- Digital registration (OCR) & QR check-in
- Pre-visit upload (insurance / LOG)
- Prepaid booking
- Self-payment (kiosk, QR, payment link)



Improve Doctor Schedule Reliability

- ✓ Enhance schedule stability and transparency to improve patient experience
- ✓ Monitor and minimize schedule changes
- ✓ Strengthen patient communication



Revamp Contact Center (WhatsApp & Call)

Enhance responsiveness and ease of access across communication channels

WhatsApp: end-to-end appointment and reminders
Call: streamlined flow with quicker access to agents



Build EMCare Digital Ecosystem

Advance toward a seamless end-to-end digital patient experience

- ✓ Integrated digital lab and radiology results
- ✓ Real-time patient journey tracking
- ✓ Easy access to comprehensive medical records

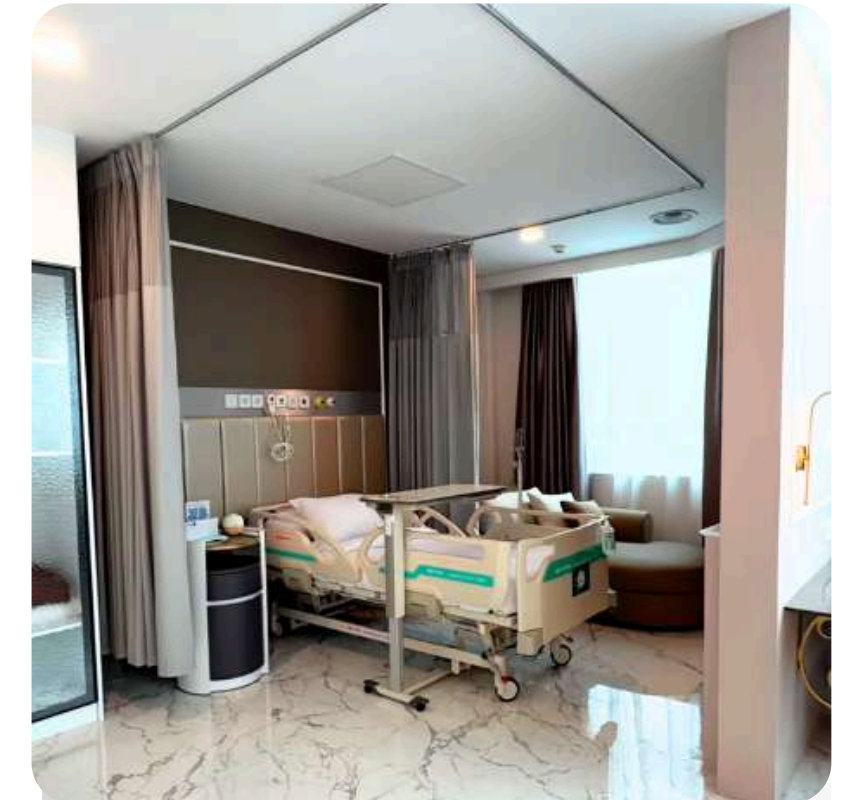
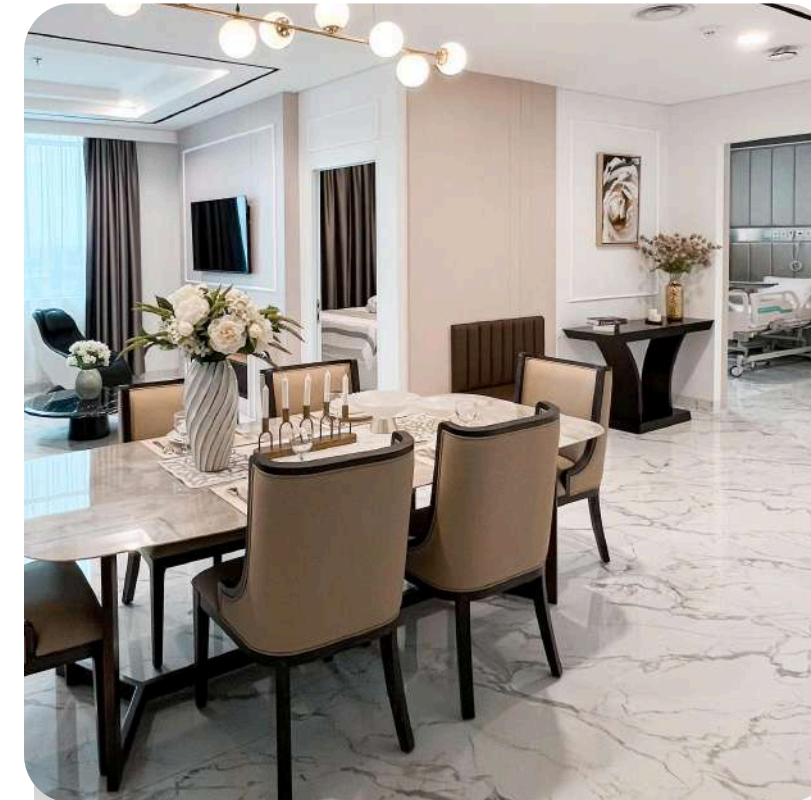


Implement Slot-Based Booking

Enhance operational efficiency and patient experience through structured scheduling

- ✓ Optimized patient flow management
- ✓ Shorter waiting times
- ✓ Greater predictability in service delivery

Hospital Renovation & Infrastructure Upgrade



Throughout 2025, EMC Sentul Hospital developed an extension building to support the expansion of its healthcare service capacity, with a total area of approximately 10,361 m², is connected to the existing hospital facility and provides additional capacity, including up to 200 inpatient beds, new outpatient clinic rooms, as well as expanded medical check-up and diagnostic facilities. The development was undertaken in response to the increasing number of patients served by the Hospital.

EMC Tangerang Hospital launched The Royal Suites Ward in 2025, which consists of several types of inpatient rooms, namely Prestige, Signature, and Royal Suite. Designed with a smart luxury concept and is equipped with several supporting facilities, including advanced patient beds, voice command based smart room features, massage chairs, as well as amenities such as luxury tableware and smart televisions. The availability of these facilities is intended to support patient comfort and provide a more modern inpatient care environment for both patients and their companions.

Collaborations and Strategic Initiatives



In 2025, SAME awarded scholarships to **19 specialist doctors** and **133 employees** in collaboration with EMC Healthcare. In addition, in collaboration with the Singapore Autonomous Universities, **SAME participated in the Global Ready Talent Programme Southeast Asia Edition** as part of its commitment to strengthening global talent capabilities.



EMC Healthcare introduced the advanced Biograph Vision Quadra PET/CT Scan that can enable whole-body imaging in just four minutes. This cutting-edge technology delivers highly detailed images and enables the detection of very small cancer lesions, supporting earlier diagnosis, more precise treatment planning, and improved clinical outcomes for patients.



HIMSS Electronic Medical Record Adoption Model (EMRAM) Stage 6 validation for EMC Grha Kedoya Hospital in 2025, reflecting the Company's commitment to advancing digital healthcare transformation and implementing integrated electronic medical record systems to enhance patient safety and quality of care.



Joint Commission International (JCI) accreditation assessment for EMC Grha Kedoya Hospital (RSGK) in 2025, reflecting the Company's commitment to maintaining international healthcare quality and patient safety standards.

Collaborations and Strategic Initiatives



In collaboration with King's College London, King's College Hospital NHS Foundation Trust, and EUROPAR, EMC Healthcare hosted **KING'S x EMC Academic Collaboration**, exclusively attended by EMC Healthcare medical personnel to improve expertise in the field of neurology related to Parkinson's disease and other movement disorders.



EMC Healthcare has established collaborations with leading insurance providers, **earning multiple awards as a Best Partner and Preferred Provider**. Key achievements obtained by EMC Healthcare include:

- Blue Eagle Partner of the Year from Allianz
- Special Recognition B2B Billing and The Best Provider from Astra Buana
- Fast Efficient Discharge Services from Generali and AFI
- Pru Priority Hospital from Prudential
- Preferred Hospital from Manulife
- Priority Network from Panin Daichi
- My Prime Hospital from MSIG and AIA
- The first Provider that implement Custom Clinical Pathway from AXA Mandiri

Corporate Social Responsibility



Official Medical Partner for The Superstar Knockout Event



Official Medical Partner for The Mariah Carey Concert



Medical Check-Up in Preparation for Superstar Knockout Event



Mini Medical Check Up for Personnel in Alam Sutera Area



Hospital Tour for Students

Strengthening Community Health

Providing Medical Services

Throughout 2025, SAME established strategic partnerships with various vendors, sportstainment, and event organizers to support professional medical services while expanding public access to EMC Healthcare. These collaborations included health screening services such as mini medical check-ups. As part of its commitment to public health, EMC Healthcare also conducted hospital tours for elementary school students to promote health awareness and provide basic health education.

Corporate Social Responsibility

Strengthening Community Health

Connecting with Community

In 2025, SAME implemented various programs to improve public access to healthcare services while also providing health education beneficial to the community through collaborations with various vendors and stakeholders. These programs included health examinations, medical check-ups, blood donations, surgical procedures, routine ultrasound examinations, and other healthcare services.



CSR Program "WARRIOR" of EMC Sentul



Routine USG Examination by EMC Cibitung



Health Service at Vihara Vimalakirti by EMC Tangerang and MNSBDI

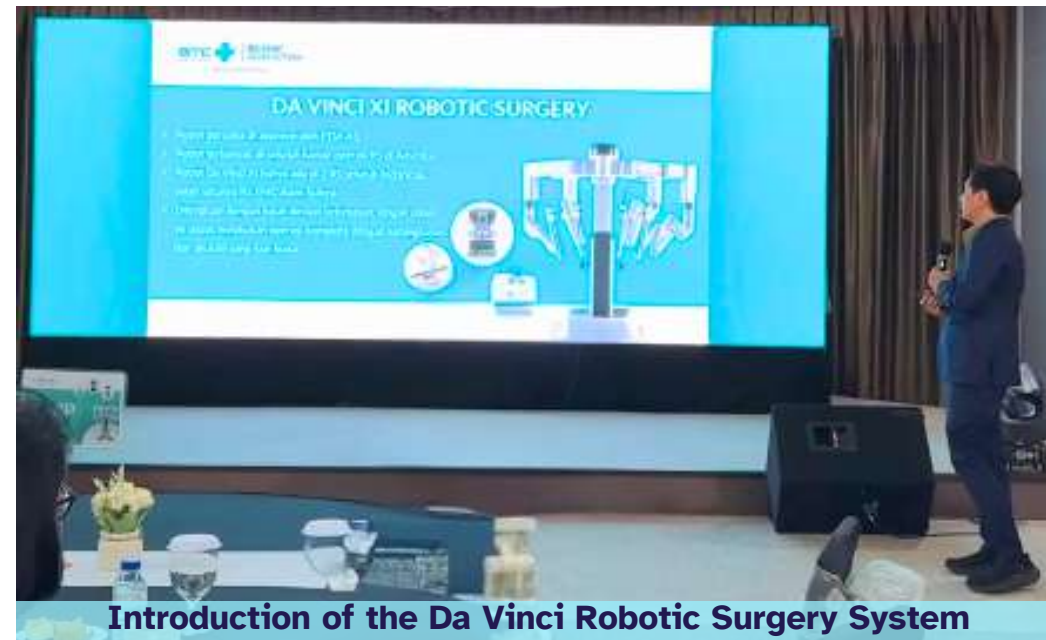


Free Mini Medical Check-Up & USG



Cleft Lip and Palate Surgeries for 100 Toddlers by EMC Tangerang

Corporate Social Responsibility



Strengthening Community Health

Promoting Health Awareness

SAME carried out various routine programs to enhance health awareness in 2025, consisting of Seminars, Health Talk, EMC Podcast Corner, and the Healthy Monday live-streaming talk show (in collaboration with Liputan6.com and Vidio.com). These programs aim to improve public health, prevent diseases, and encourage the adoption of healthy lifestyles.

AGENDA

1. COMPANY OVERVIEW

2. STRATEGIC INITIATIVES

3. PERFORMANCE REVIEW



FINANCIAL PERFORMANCE

Profit or (Loss) for the year ended 31 December 2024 vs 31 December 2025

INFORMATION	Dec 31, 2024 Audited	Dec 31, 2025 Audited	INCREASE (DECREASE)
REVENUES - NET	1.706.381.445.188	1.861.971.853.309	155.590.408.121
COST OF REVENUES	1.192.181.857.204	1.309.399.929.666	117.218.072.462
GROSS PROFIT	514.199.587.984	552.571.923.643	38.372.335.659
Selling expenses	(23.002.845.708)	(26.405.612.968)	3.402.767.260
General and administrative expenses	(398.687.463.959)	(414.716.212.083)	16.028.748.124
Other operating income - net	9.919.746.922	4.246.297.137	(5.673.449.785)
OPERATING INCOME	102.429.025.239	115.696.395.729	13.267.370.490
Finance cost	(85.890.121.557)	(78.895.370.713)	(6.994.750.844)
Finance income	4.138.212.142	2.165.414.461	(1.972.797.681)
Share profit from associate	17.491.936.706	20.328.768.362	2.836.831.656
PROFIT BEFORE TAX	38.169.052.530	59.295.207.839	21.126.155.309
Income Tax Benefit (Expenses)	(17.563.607.608)	(21.830.628.461)	4.267.020.853
PROFIT FOR THE PERIOD	20.605.444.922	37.464.579.378	16.859.134.456
Profit for the period attributable to:			
Owners of the Parent Entity	11.848.736.148	30.075.776.642	18.227.040.494
Non-controlling interest	8.756.708.774	7.388.802.736	(1.367.906.038)

FINANCIAL PERFORMANCE

Statement of Financial Position as of 31 Desember 2024 vs 31 Desember 2025

INFORMATION	31 DECEMBER 2024	31 DECEMBER 2025	INCREASE (DECREASE)
ASSETS			
Total Current Assets	491.219.565.349	506.794.853.447	15.575.288.098
Total Non-Current Assets	5.067.090.904.733	5.295.360.431.520	228.269.526.787
Total Assets	5.558.310.470.082	5.802.155.284.967	243.844.814.885
LIABILITIES			
Total Current Liabilities	663.174.367.256	953.486.902.935	290.312.535.679
Total Non-current Liabilities	756.885.618.760	682.920.650.711	(73.964.968.049)
Total Liabilities	1.420.059.986.016	1.636.407.553.646	216.347.567.630
EQUITY			
Total Equity attributable to Owners of the Company	3.780.421.309.222	3.801.240.824.210	20.819.514.988
Non-controlling interests	357.829.174.844	364.506.907.111	6.677.732.267
Total Equity	4.138.250.484.066	4.165.747.731.321	27.497.247.255

FINANCIAL PERFORMANCE

Statement of Cash Flow for the year ended 31 December 2024 vs 31 December 2025

INFORMATION	31 DECEMBER 2024	31 DECEMBER 2025
Cash Flows From Operating Activities	264.263.486.107	340.148.916.732
Cash Flows From Investing Activities	(250.978.149.710)	(325.621.466.118)
Cash Flows From Financing Activities	5.189.746.736	(8.837.702.404)
Net Increase in Cash and Cash Equivalents	18.475.083.133	5.689.748.210
Cash and Cash Equivalent at Beginning of the Year	128.285.007.028	146.760.090.161
Cash and Cash Equivalent at Ending of the Year	146.760.090.161	152.449.838.371



THANK YOU

[www emc.id/corporate](http://www.emc.id/corporate) corsec@emc.id 0881 080 779977

